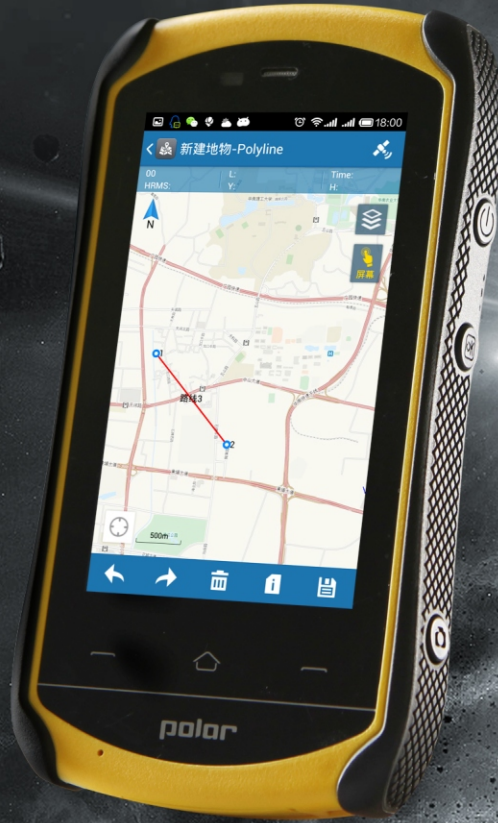


Polaris

# X2



Beidou



high accurate positioning



industrial 3-proofings



double platform



Micro USB



Bluetooth



wireless



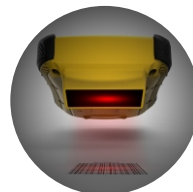
touch screen



HD Camera



network module



scanning function(optional)



Talkback function(optional)



project	Functional configuration	Detailed parameters	
System	OS	WEH6.5 ( WM6.5 updated version Android 4.4.2	
	processor	1GHz	quad core 1.3GHz
	storage	512MB RAM	1GB RAM
16GB ROM 32GB ( optional ) up to 32G extensible			
GNSS	GNSS	GPS L1,BDS B1 , GLONASS L1( optional)	
	data output	NEMA-0183	
	I/O protocol	RTCM2.3(1.3.9), RTCM21 etc.	
	update rate	1Hz	
	reacquisition	< 1s	
	cold start	< 30s	
	Accuracy	single point positioning	
SBAS : 2~5 m			
realtime differential			
multimedia	camera	5.0 megapixel AF, flashlight	8.0 megapixel AF, flashlight
	display	Resistive screen 4.3inch 480×800	capacitives creen 4.3inch 480×800
	mobile phone	Voice call and MMS	
	sensor	electronic compass,gravity sensor,Built-in thermometer atmospheric pressure altimeter,ight sensor and Distance sensor ( optional )	
	other function	integrated speakers and microphone	
	extended function ( optional )	scanning head,NFC,backtalk,Fingerprint recognition	
communication	3G	WCDMA	
	Bluetooth	BT2.1+EDR	BT4.0 downward compatibility BT2.1+EDR
	WIFI	IEEE 802.11 b/g/n	
	USB	support USB charging and OTG function	
electrical	battery	changeable 3.7V 4200mAh Li-Ion,2 batteries ( standard )	
	battery life	single battery>10 hrs	
	battery charging	2 stands charger, 2 hrs fast charging; supports car-charger and charge pal	
environment	waterproof /dustproof	IP67	
	shockproof	1.5m	
	temperature	operation temp:-30°C ~60°C storage temp:-40°C ~80°C	
physical property	size	156×85×29 ( mm )	
	weight	0.32kg ( battery included )	

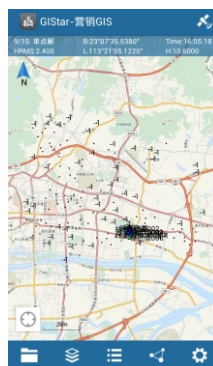
## software

### data collection

- shortcut key of collection
- point、line、surface alternate collection
- multi-measuring tape tool
- abundant graphics label
- collection and mapping together
- length and area calculation

### intelligent

- auto update
- remote register
- online map
- data dictionary
- multiple customization
- auto report

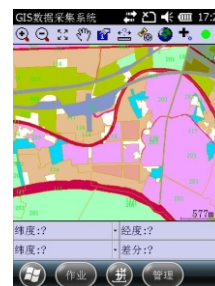


### multiple formats import and export

- Excel
- AutoCAD
- ArcGIS
- MapGIS
- user-defined format

### toolkit

- coordinate transformation
- area calculation
- parameter calculation
- network testing
- navigation stakeout



\* 由于产品的升级、更新，产品外观及参数可能有变，本彩页内容仅供参考

